



Clavaria fragilis

Zerbrechliche Keule, Wurmformige Koralle

Fungi, Dikarya, Basidiomycota, Agaricomycotina, Agaricomycetes, Agaricomycetidae, Agaricales, Clavariaceae

Legitimate

Holmsk. 1790

Aktueller Name gem. MycoDB: Clavaria fragilis Holmsk., Beata ruris otia fungis danicis 1: 7, t. 2-3 (1790) [MB182991]

Taxonomische Synonyme:

Clavaria cylindrica Bull., Herbar de la France 10: t. 463:1 (1790) [MB255282]

Xylaria albicans var. cylindrica (Bull.) Gray, A natural arrangement of British plants 1: 511 (1821) [MB472087]

Clavaria glabra J.F. Gmel., Systema Naturae 2 (2): 1442 (1792) [MB497240]

Clavaria pistilliforme Pers., Mycologia Europaea 1: 183 (1822) [MB535685]

Clavaria alba Pers., Traité sur les Champignons Comestibles: 255 (1818) [MB227750]

Clavaria corynoides Peck, Annual Report on the New York State Museum of Natural History 31: 39 (1879) [MB145592]

Multiclavula corynoides (Peck) R.H. Petersen, The American Midland Naturalist 77: 215 (1967) [MB334548]

Clavulinopsis corynoides (Peck) Corner, Beihefte zur Nova Hedwigia 33: 58 (1970) [MB311284]

Clavaria gracilior Britzelm., Hymenomyceten aus Südbayern 9: 14 (1891) [MB193810]

Clavaria muelleri Berk. ex Cooke, Grevillea 20: 10 (1891) [MB210398]

Clavaria nivea Qué., Comptes Rendus de l'Association Française pour l'Avancement des Sciences 30 (2): 496 (1901) [MB144925]

Clavaria pistilliforma Pers. (1822) [MB468761]

Clavaria simplex P. Karst., Bidrag till Kännedom av Finlands Natur och Folk 37: 172 (1882) [MB468777]

Clavaria solida Gray, A natural arrangement of British plants 1: 656 (1821) [MB468779]

Clavaria vermicularis Sw., Kungl. Svenska Vetenskapsakad. Handl.: 159, t. 6:2 (1811) [MB473459]

Clavaria vermiculata var. flexuosa Pers., Mycologia Europaea 1: 184 (1822) [MB498268]

Clavaria eburnea Pers., Synopsis methodica fungorum: 603 (1801) [MB468730]

Clavaria eburnea var. fragilis (Holmsk.) Pers., Synopsis methodica fungorum: 603 (1801) [MB498240]

Clavaria nivea Qué., Comptes Rendus de l'Association Française pour l'Avancement des Sciences 30 (2): 496 (1901) [MB501959]

makroskopisch

Fruchtkörperfarbe / Farbspektrum

Weiss mit dunkler Spitze

mikroskopisch

Sporenform

Elliptisch

Sporenmembran, Oberfläche, Skulptur

Glatt

Gattung/en:Clavaria <https://www.mycopedia.ch/pilze/3667.htm>**Siehe auch**Clavaria candida <https://www.mycopedia.ch/pilze/10058.htm>



Clavaria fragilis

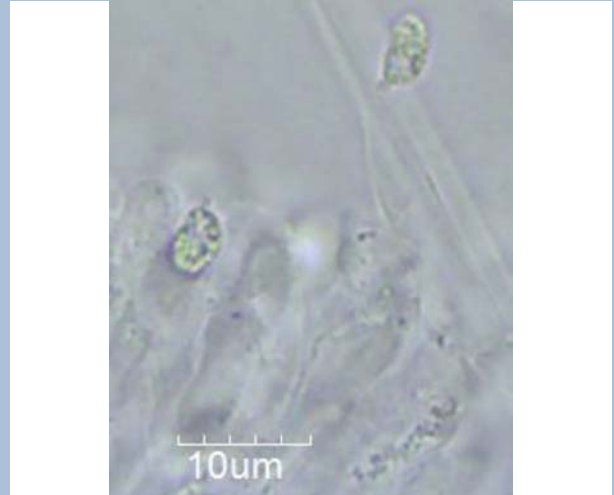
Zerbrechliche Keule, Wurmformige Koralle

Fungi, Dikarya, Basidiomycota, Agaricomycotina, Agaricomycetes, Agaricomycetidae, Agaricales, Clavariaceae



Flammer, T©

4858 09.08.2014



Flammer, T©

4867 09.08.2014