



## Entoloma incarnatofuscescens

## Lilagrauer Rötling

Fungi, Dikarya, Basidiomycota, Agaricomycotina, Agaricomycetes, Agaricomycetidae, Agaricales, Entolomataceae

Legitimate (Britzelm.) Noordel. 1985

Aktueller Name gem. MycoDB: Entoloma incarnatofuscescens (Britzelm.) Noordel., Persoonia 12 (4): 461 (1985) [MB104243]

Basionym: Agaricus incarnatofuscescens Britzelm., Hymenomyces aus Südbayern 10 (Theil VII): Leucospoi, Hyporhodii, Dermini, Melanospori, Cortinarius, Hygrophorus, Lactarius, Russula. Cantharellus, Marasmius, Panus, Lenzites, Boletus, Polyporus, Hydnei, Thelephorei, und Clavarien 10: 6 (1894) [MB372150]

Obligates Synonym: Leptonia incarnatofuscescens (Britzelm.) Sacc., Sylloge Fungorum 11: 47 (1895) [MB159921]

Taxonomische Synonyme:

Rhodophyllus leptonipes Kühner & Romagn., Revue de Mycologie (Paris) 19 (1): 8 (1954) [MB305239]

Entoloma leptonipes (Kühner & Romagn.) M.M. Moser, Kleine Kryptogamenflora - Die Röhrlinge und Blätterpilze (Agaricales) IIb/2: 210 (1978) [MB313749]

Leptonia leptonipes (Kühner & Romagn.) P.D. Orton, Transactions of the British Mycological Society 43 (2): 177 (1960) [MB333204]

Omphaliopsis leptonipes (Kühner & Romagn.) P.D. Orton, Mycologist 5 (4): 173 (1991) [MB359021]

Entoloma klofacianum Noordel., Wölfel & Hauskn., Österreichische Zeitschrift für Pilzkunde 4: 128 (1995) [MB413018]

Entoloma violaceoparkensis Noordel. & Trichies, Fungi Europaei 5a: 1120 (2004) [MB491870]

makroskopisch

**Fruchtkörper / Habitus / Wachstumsform**

Kleine unter 30 mm grosse omphalinaartige Art, mit Nabel.

**Stielfarbe / Rinde**

Violett, violett-schwarz

**Gattung/en:**

Entoloma

<https://www.mycopedia.ch/pilze/1025.htm>



*Entoloma incarnatofuscescens*

Lilagrauer Rötling

Fungi, Dikarya, Basidiomycota, Agaricomycotina, Agaricomycetes, Agaricomycetidae, Agaricales, Entolomataceae



Flammer, T©

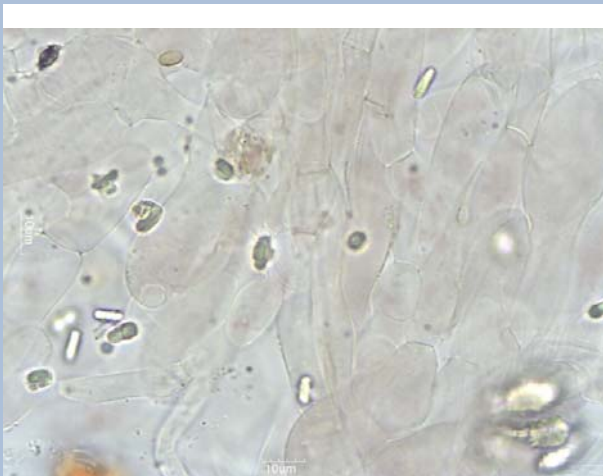
4801 06.08.2014



Flammer, T©

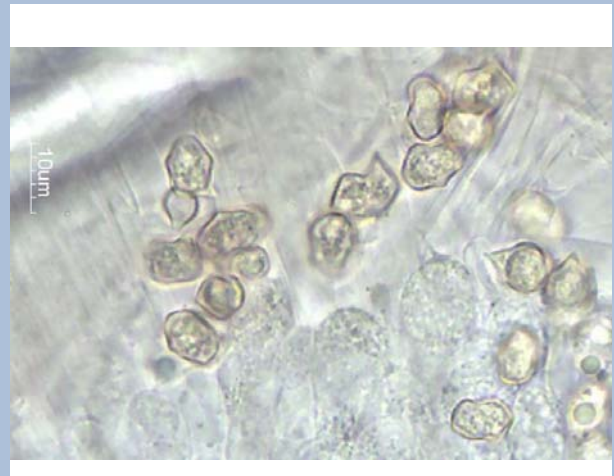
4871 09.08.2014

HDS



Flammer, T©

4817 06.08.2014



Flammer, T©

4816 09.08.2014



**Entoloma incarnatofuscescens**

**Lilagrauer Rötling**

Fungi, Dikarya, Basidiomycota, Agaricomycotina, Agaricomycetes, Agaricomycetidae, Agaricales, Entolomataceae

