



Thelephora wakefieldiae

Weinbraunes Filzgewebe

Fungi, Dikarya, Basidiomycota, Agaricomycotina, Agaricomycetes, Thelephorales, Thelephoraceae

Legitimate Zmitr., Shchepin, 2018
Volobuev & Myasnikov

Aktueller Name gem. MycoDB: Thelephora wakefieldiae Zmitr., Shchepin, Volobuev & Myasnikov, Current Research in Environmental & Applied Mycology 8 (3): 367 (2018) [MB825554]

Basionym: Zygodessmus sublilacinus Ellis & Holw., Bulletin of the Minnesota geological and Natural History Survey Botanical Series 3: 34 (1887) [MB165374]

Obligates Synonym: Tomentella sublilacina (Ellis & Holw.) Wakef., Mycologia 52 (6): 931 (1962) [MB340129]

Taxonomische Synonyme:

Tomentella pseudopannosa Wakef., Transactions of the British Mycological Society 53: 189 (1969) [MB340122]

Thelephora pseudopannosa (Wakef.) Zmitr., Shchepin, Volobuev & Myasnikov, Current Research in Environmental & Applied Mycology 8 (3) (2018) [MB824107]

Hypochnus avellaneus Burt, Annals of the Missouri Botanical Garden 3: 225 (1916) [MB225507]

Tomentella avellanea (Burt) Bourdot & Galzin, Bulletin de la Société Mycologique de France 40 (2): 153 (1924) [MB208179]

Tomentella fusca subsp. castanea Bourdot & Galzin, Bulletin de la Société Mycologique de France 40 (2): 148 (1924) [MB471868]

Hypochnus castaneus (Bourdot & Galzin) Donk, Nederlandsch Kruidkundig Archief: 82 (1930) [MB260062]

Tomentella castanea (Bourdot & Galzin) Donk, Mededelingen van het botanisch Museum en Herbarium van de Rijksuniversiteit Utrecht 9: 31 (1933) [MB260044]

Tomentella fuscella var. castanea (Bourdot & Galzin) S. Lundell, Fungi Exsiccati Suecici Fasc. 45-46: p. 9 (1954) [MB352536]

Tomentella castanea (Bourdot & Galzin) Donk (1924) [MB208292]

Tomentella porulosa f. albomarginata Bourdot & Galzin, Hyménomycètes de France: 505 (1928) [MB227159]

makroskopisch

Fruchtkörper / Habitus / Wachstumsform

Resupinat auf Totholz, filziges, dünnes Gewebe

Fruchtkörperfarbe / Farbspektrum

Mit Lilatönen, schmutzigbraun

mikroskopisch

Sporenform

Unregelmässig eckig

Sporenmembran, Oberfläche, Skulptur

Stachelig

Hyphen / Hyphensystem

Monomitisch, braun, dickwandig, mit Schnallen

Gattung/en:

Thelephora

<https://www.mycopedia.ch/pilze/7135.htm>



Thelephora wakefieldiae

Weinbraunes Filzgewebe

Fungi, Dikarya, Basidiomycota, Agaricomycotina, Agaricomycetes, Thelephorales, Thelephoraceae



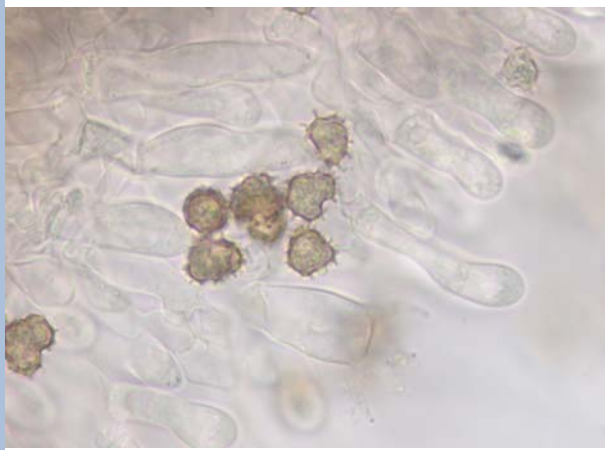
Flammer, T©

10175 24.10.2019



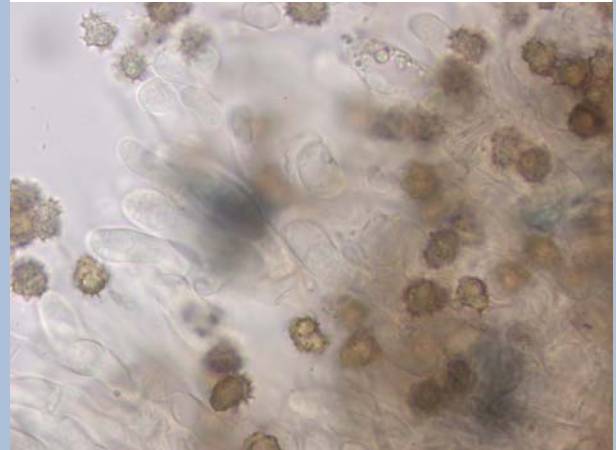
Flammer, T©

10189 24.10.2019



Flammer, T©

10177 24.10.2019



Flammer, T©

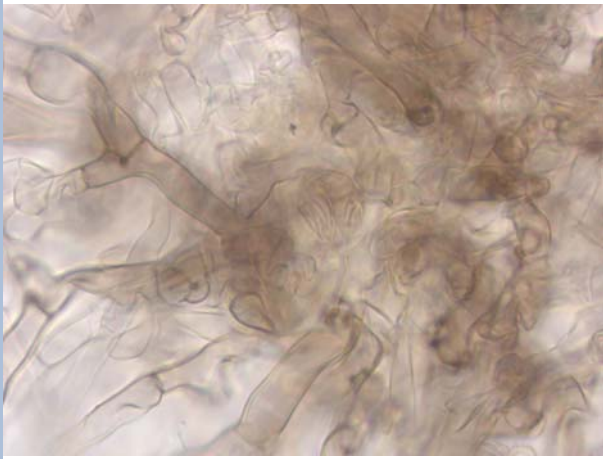
10176 24.10.2019



Thelephora wakefieldiae

Weinbraunes Filzgewebe

Fungi, Dikarya, Basidiomycota, Agaricomycotina, Agaricomycetes, Thelephorales, Thelephoraceae



Flammer, T©

10178 24.10.2019